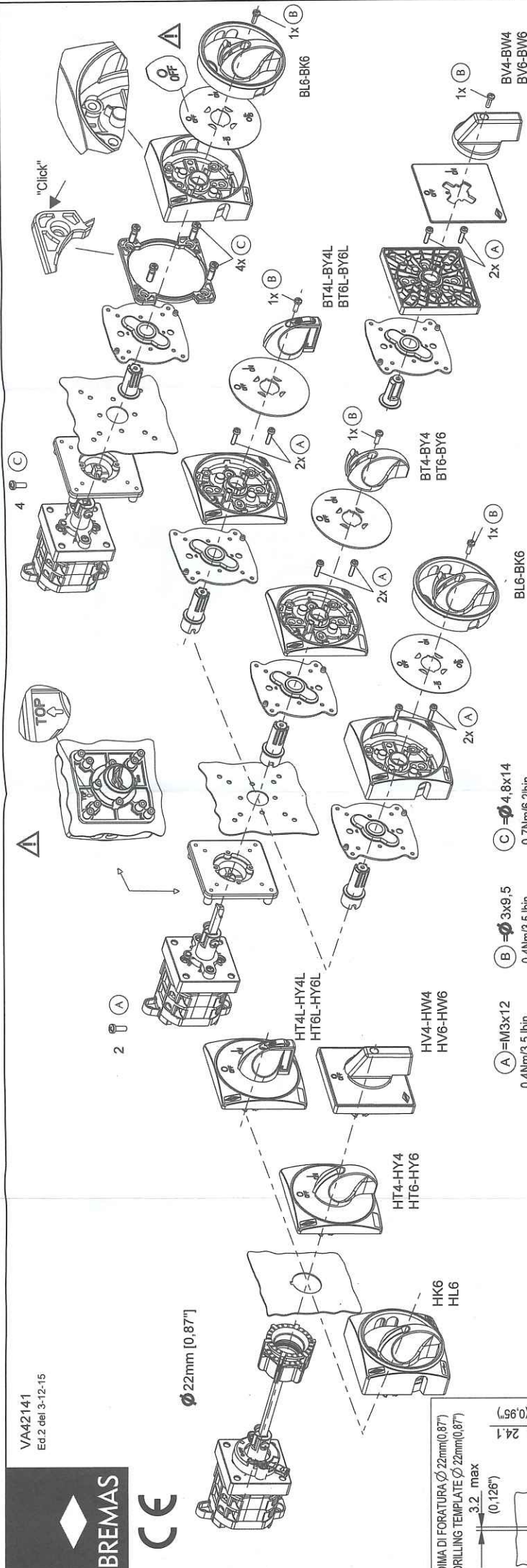
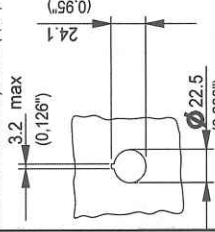


Ø 22mm [0,87"]

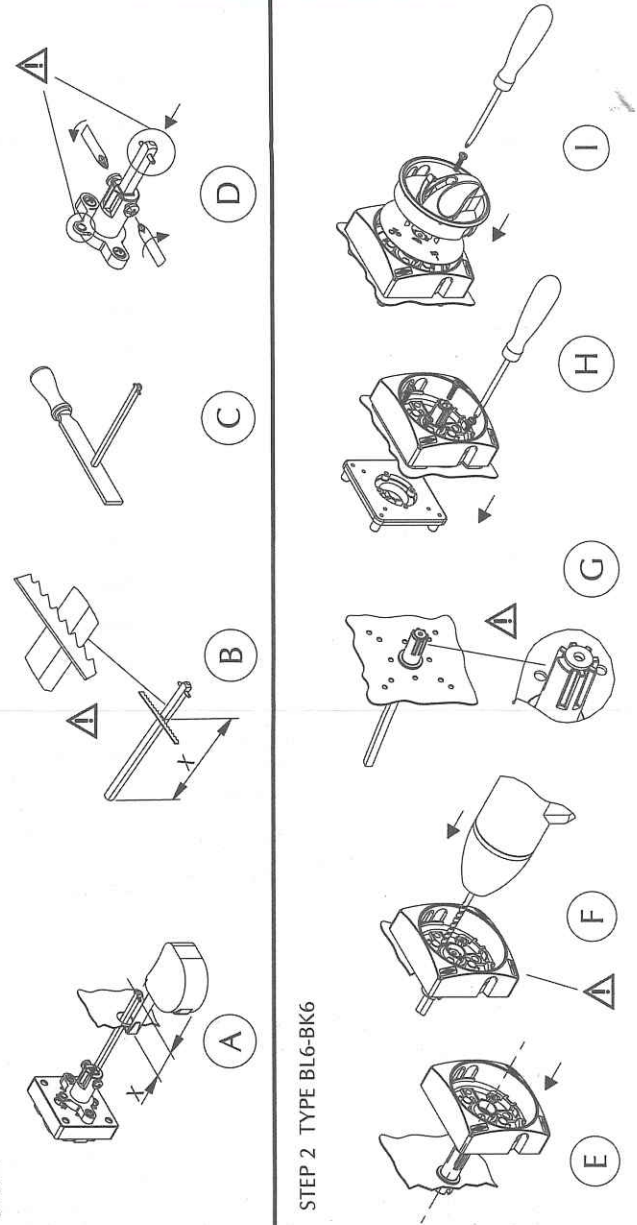


DIMA DI FORATURA Ø 22mm(0,87")
DRILLING TEMPLATE Ø 22mm(0,87")

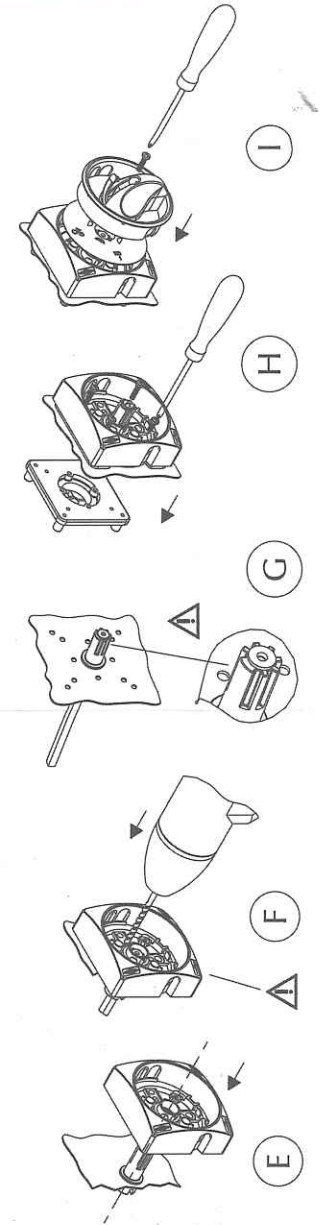


- (A) = M3x12
0,4Nm/3,5 lbin
 - (B) = Ø 3x9,5
0,4Nm/3,5 lbin
 - (C) = Ø 4,8x14
0,7Nm/6,2 lbin
- Phillips 1/4, 5mm
Phillips 1/4, 5mm
Phillips 1/4, 5mm

STEP 1



STEP 2 TYPE BL6-BK6



DIMA DI FORATURA - DRILLING TEMPLATE

	A	B	C	D	E	F	Ø H	Ø L	Ø G
CR012-016-020-026	36	36	48	48	48	5	3,2	10	
	(1,42")	(1,42")	(1,89")	(1,89")	(1,89")	(0,2")	(0,13")	(0,39")	
CR025-032-040-051	36	36	48	48	48				
	(1,42")	(1,42")	(1,89")	(1,89")	(1,89")				
CA012-016	28	32	36	36	48				
	(1,1")	(1,26")	(1,42")	(1,42")	(1,89")				
CA025-032	40	40	40	40	40				
	(1,57")	(1,57")	(1,57")	(1,57")	(1,57")				
CA012-016-020-026	30	90							
	(1,181")	(3,54")							
CA050									
CA063									
CA100-CA630									

DIMA FORATURA FONDO QUADRO - DRILLING TEMPLATE BASE MOUNTING

SERIE	FISSAGGIO FONDO-BASE MOUNTING		FISSAGGIO ANTERIORE-FRONT MOUNTING	
	Ø A	Ø H	Ø E	Ø F
CR012-016-020-026	58(2,28")	94-110	36	36
CR025-032-040-051	58(2,28")	94-110	36	36
CR012-016	43(1,71")	26(1,02")	36	36
CR025-032	43(1,71")	26(1,02")	36	36
CA012-016-020-026	43(1,71")	26(1,02")	36	36
CA025-032-040-051	43(1,71")	26(1,02")	36	36
CA050	84(3,31")	94-110	36	36
CA063	84(3,31")	94-110	36	36
CA100-CA630	84(3,31")	94-110	36	36

SERIE	STANDARD		H=500mm (19,69")	
	H=15mm (0,59")	H=30mm (1,18")	Lmin.	Lmax.
CR012-016-020-026	99 (3,90")	243 (9,57")	388 (14,49")	565 (22,245")
CR025-032-040-051	109 (4,29")	253 (9,96")	378 (14,882")	576 (22,700")
CR012-016	115 (4,53")	259 (10,20")	384 (15,12")	584 (22,993")
CR025-032	117 (4,61")	261 (10,276")	386 (15,20")	586 (23,071")
CA012-016-020-026	114 (4,49")	258 (10,16")	383 (15,08")	583 (22,943")
CA025-032-040-051	117 (4,61")	261 (10,276")	386 (15,20")	586 (23,071")
CA050	151 (5,945")	399 (15,712")	515 (20,275")	702 (27,638")
CA063	151 (5,945")	399 (15,712")	515 (20,275")	702 (27,638")
CA100	182 (7,166")	465 (18,307")	608 (23,937")	824 (32,437")
CA200	200 (7,875")	504 (19,843")	664 (26,142")	904 (35,591")